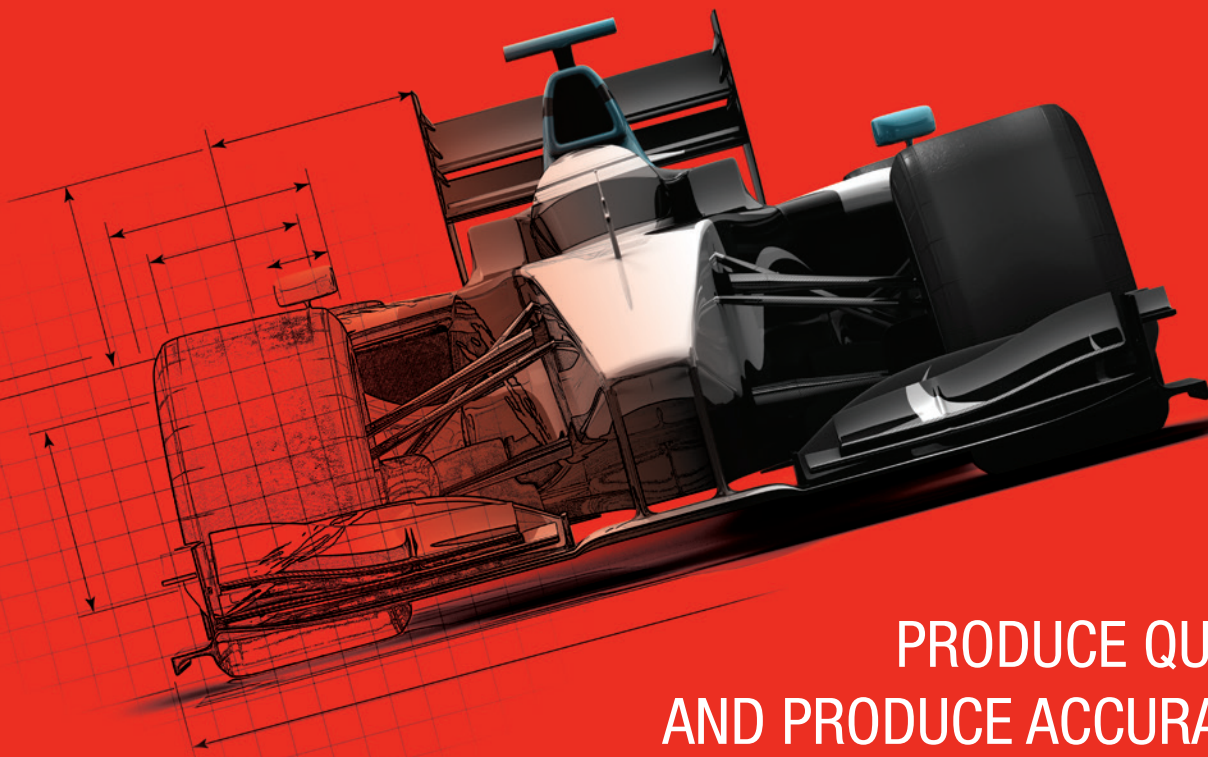


TopSolid



PRODUCE QUICKLY
AND PRODUCE ACCURATELY:
IDEAS TURNED INTO REALITY

CAD

CAM

PDM



A TEAM LIKE NO OTHER

Missler Software is the world's leading publisher of CAD/CAM/PDM software. We have **over 30 years** of experience developing our fully integrated CAD/CAM/PDM solution for design (mechanical, mold & die, wood, sheet metal), machining (metalworking and woodworking) and information management.

The TopSolid product line is modern, comprehensive and unique on the market. We are **continuously innovating** to ensure our product meets your highest expectations. TopSolid is a 100% French product, developed by highly qualified engineers and scientists, who have a passion for the engineering and manufacturing trades. The company has expanded significantly on the international stage in the last decade with subsidiaries in the US, Brazil, China, Italy, Switzerland and Turkey. Today we distribute TopSolid all over the world, with more than 40% of our software products being exported to every continent. More than 500 Missler Software employees and resellers develop, sell and support TopSolid all over the world every day. We keep our more than 50,000 customers satisfied by staying close to them and establishing relations based on a sense of service.



Christian Arber
President and CEO of Missler Software

› Missler Software celebrates its **30th anniversary** during the annual International Seminar

TOPSOLID

YOUR ONLY CHOICE FOR AN INTEGRATED CAD/CAM/PDM SOLUTION

You have been looking for a solution that was *developed specifically for the way you work*. Instead you find yourself coming up short and working with several solutions to attempt to solve the problem. Thankfully, your search is over...you have found TopSolid.

The unique, attractive, reliable and incredibly productive line of TopSolid products is a powerful modeling, production and management solution that

will meet your production needs, irrespective of your field of activity and no matter whether you are an SME or a multinational.

Join thousands of other companies from around the world such as, Panasonic®, Safran®, Legrand®, DCNS®, GE®, Sanyo®, Sidel® and others that have increased their productivity by *switching to TopSolid*.

\$34M+ turnover

100,000+ licenses worldwide
(excluding education)

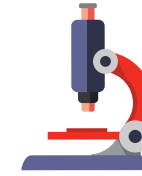
30+ years of experience

30% of staff in R&D

500+ employees and distributors



OUR VALUES



INNOVATION

TopSolid is a concentration of innovation and technologies that combines algorithms, geometry, material, mechanics and science (metal, wood, and sheet metal), IT, world-class ergonomics and process engineering.



BUSINESS EXPERTISE

TopSolid is developed based on manufacturing being the end goal. This embodies the expertise of our entire staff worldwide.



CLOSE TO YOU

Through *our network* of subsidiaries, branch offices, resellers and agents, we are proud to be close at hand to help with the implementation of your production processes and contributing to your complex developments.



INTERNATIONAL PRESENCE

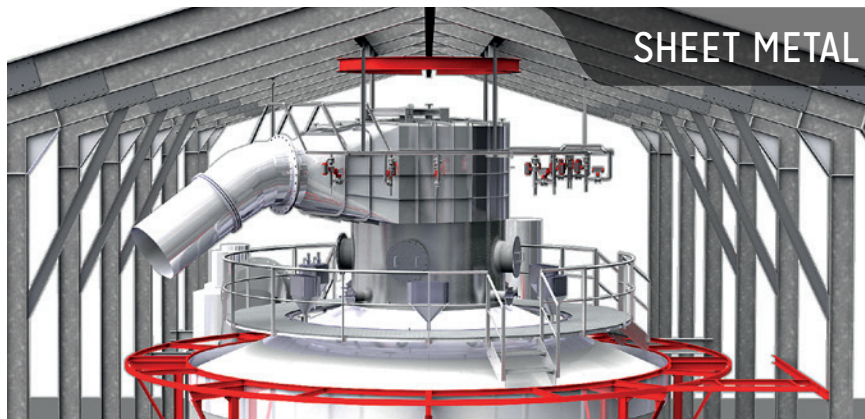
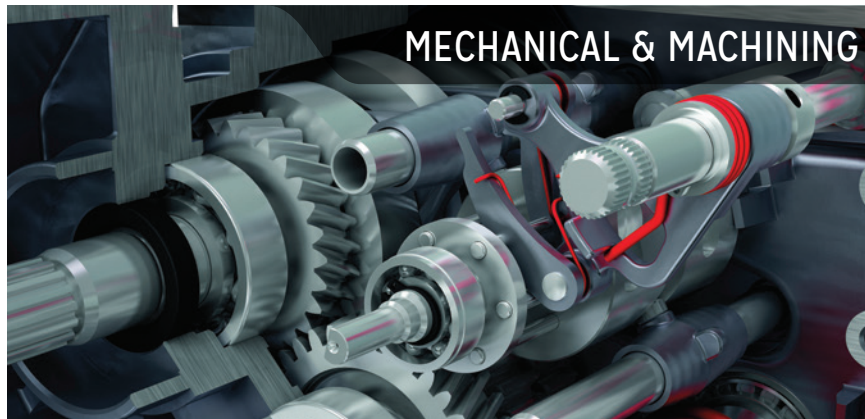
France, Europe, Asia, the Americas, Australia... *Our customers are everywhere*. They talk, develop, collaborate, share and work together. TopSolid helps to keep customers connected thanks to a network of more than 60 resellers and their teams all over the world.

We innovate because we have traveled the world to meet you and understand your business. Our mission and our passion consists of transposing your process into TopSolid to make your everyday work and production...*easier*.

TOPSOLID AT THE HEART OF TODAY'S... AND LEADING TOMORROW'S FUTURE

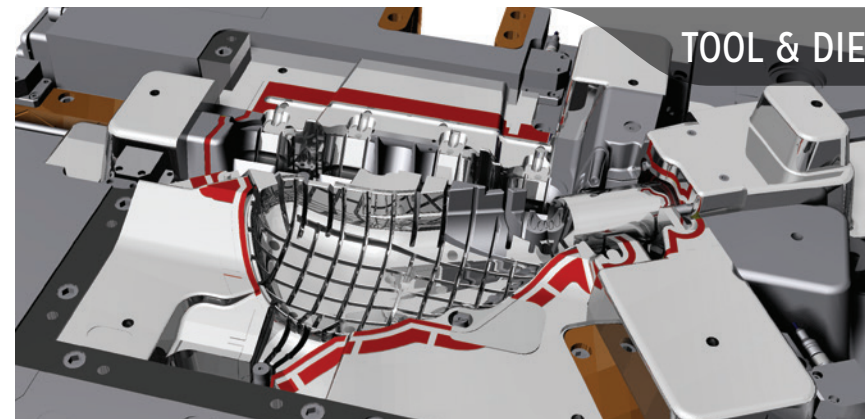
TOPSOLID EMPOWERS THE FOLLOWING INDUSTRIES:

- Aerospace
- Transport
- Machining
- Tool & Die
- Special machinery
- Fittings
- Sheet metal work
- Metalworking
- Medical
- Energy
- Education
- Consumer
- Mechanical
- Electrode



"We significantly improved our *time to market* and our quality of service by delivering reliable 3D drawings to our subcontractors. Thanks to TopSolid, we boosted our productivity by 30%, which represented a significant financial gain."

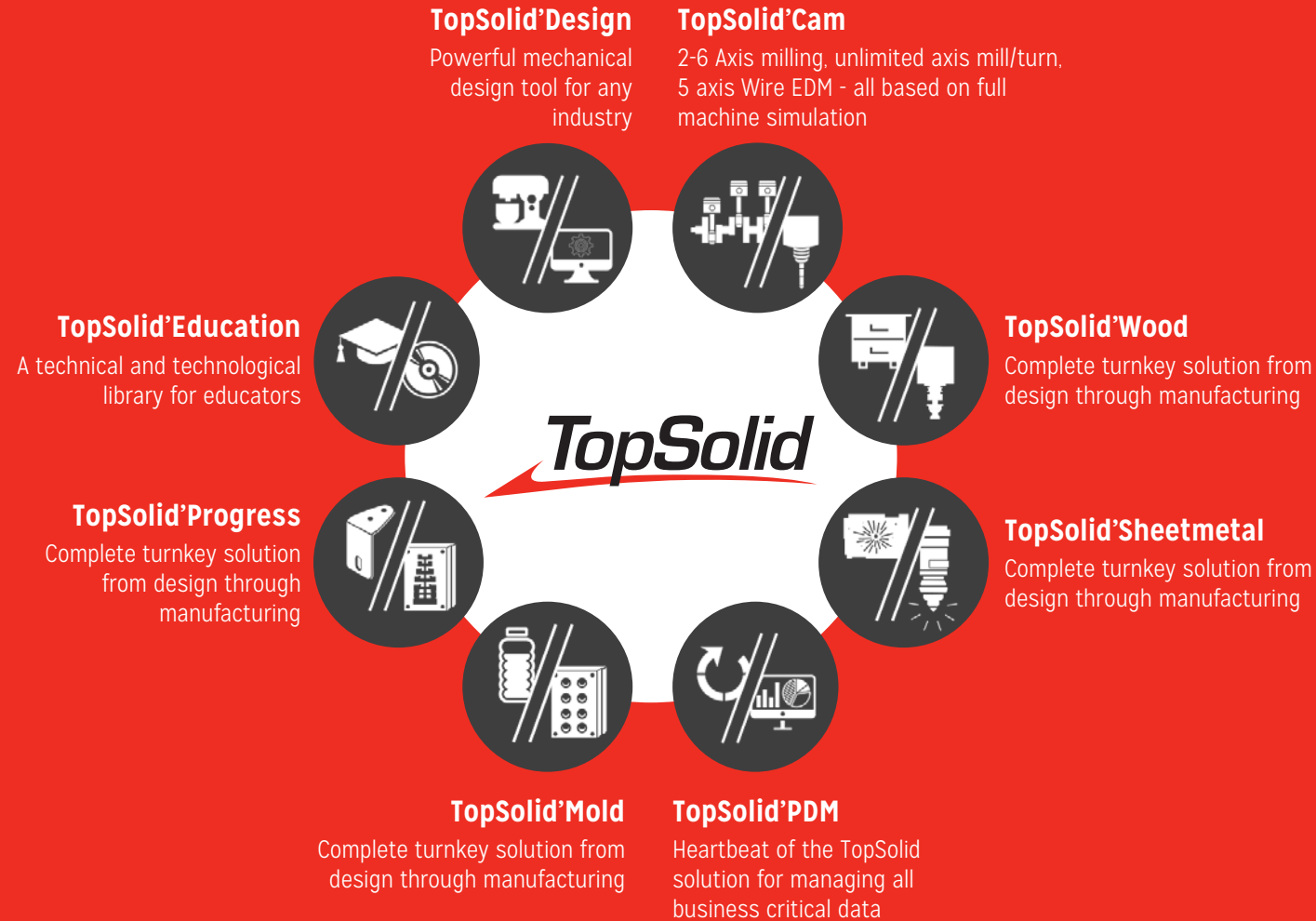
M. Zingerlé
ABI



Every profession is different and has its own vocabulary, practices and communities. For every industry, **TopSolid offers a solution** with specially developed options and a methodology. Boat outfitters collaborate with carpenters and metal workers. Designers of high-precision mechanisms talk to machine operators. Designers of plastic parts, discuss with tool and die specialists. Combined with TopSolid, this makes up an extended digital chain.

The digital chain in TopSolid takes the form of components, processes and data flows that are particular to each industry that in turn forms a true repository of the company's knowledge and best practices. TopSolid offers a diverse range of industry specific applications that are overall compatible because they are built on the same software foundations. Because of this, each department or even industry can share information instantaneously and without loss of data. And to top it all off, **TopSolid's PDM heartbeat** ensures that all parties are always working to the latest version of the data...seamlessly.

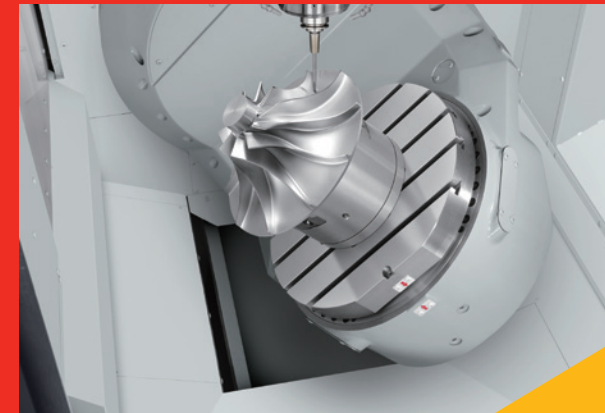
TOPSOLID'S INDUSTRY LEADING SOLUTIONS



INDUSTRY EXPERTS HERE TO HELP

50% of employees work in the field

100% of employees focused on customer satisfaction



OUR COMMITMENT TO YOUR SUCCESS

- 70 plus certified training courses *
- Local support hotlines with direct communication to the development teams
- Made to expectation post-processors
- Missler Software Services for specific software developments

* Recognized by the French Commission for Professional Service Qualifications

TOPSOLID WORLDWIDE

OUR SUBSIDIARIES:

- 1 **MISSLER SOFTWARE BRAZIL**
- 2 **MISSLER SOFTWARE CHINA**
- 3 **MISSLER SOFTWARE INC. / USA**
- 4 **MISSLER SOFTWARE ITALIA S.R.L.**
- 5 **MISSLER SOFTWARE SWITZERLAND**
- 6 **MISSLER SOFTWARE TURKEY**

● RESELLER NETWORK



60

international resellers

50,000

customers worldwide

100,000

licenses



▲ The Missler Software Inc. subsidiary based in Chicago

PRODUCTIVE AND STRATEGIC PARTNERSHIPS

Software publishers:
Lectra, Simcon, Microsoft...

Component libraries:
Vericut, Hettich, Hasco, Adveon, Traceparts, Blum...

Machine tool manufacturers:
DMG-Mori, Mazak, Haas, Trumpf, Amada, Biesse Group, Homag...

Software components:
Redway 3D, AMD, Machine works...

**MISSLER SOFTWARE
HEADQUARTERS**

7, rue du Bois Sauvage
91055 Evry
France
+33 (0)1.60.87.20.20
info@topsolid.com



FOLLOW TOPSOLID:

www.topsolid.com

blog.topsolid.com

 TopSolid

 @TopSolid

 TopSolid

**MISSLER SOFTWARE
SWITZERLAND**

Quai de la Sorne, 8
2800 Delemont
+41 32 421 02 30
ms.switzerland@topsolid.com

**MISSLER SOFTWARE
ITALIA S.R.L.**

Via Tacito, 51 D-E
41123 Modena
+39 059 84 71 21
sales@topsolid.it

MISSLER SOFTWARE INC.

2121 Army Trail Rd., Suite 104
60101 Addison - USA
+1 (630) 889 8055
contact.usa@topsolid.com

**MISSLER SOFTWARE
BRAZIL**

Rua Dr. Diogo de Faria,
1.087 cjs. 107 to 110
04037-000 São Paulo
+55 (11) 5084 0048
vendas@topsolid.com.br

**MISSLER SOFTWARE
CHINA**

2/F. No. 379 Bao Tun Lu -
Espace Rhône-Alpes
200011 Shanghai
+86 21 6482 6033
china@topsolid.com

**MISSLER SOFTWARE
TURKEY**

Fetih Mahallesi Libadiye Caddesi
Tahralli Sokak Tahralli Sitesi
Kavakyeli Is Merkezi No:7a K:2 D:5
Atasehir
+90 216 470 06 80
3bdizayn@3bdizayn.com.tr